

Dansereau Compressor Owners Manual 2 Horsepower

USA Phone: (800) 423-5657
International Phone: (909) 549-1400
Fax: (909) 549-1411
Website: WWW.DHPDENTAL.COM
E MAIL: Harry@dhp dental.com

Manufactured at: 250 E. Harrison Street, Corona 92879

DHP Air Compressor - General Information - Section 1

Section 1 - General Information / Special Services

Section 2 - Pre-installation Guide

Section 3 - Unpacking and Installation

Section 4 - Maintenance

Section 5- Trouble Shooting Guide

World Wide Toll-Free Access

DHP has instituted a toll free telephone service in the United States, Canada and Mexico. Our telefax line (909) 549-1411 is available 24 hours a day.

Toll Free Phone:

U.S.A. and Puerto Rico 1-800-423-5657

Canada 1-800-423-5657

Mexico 095-800-423-5657

Customer Service

DHP customer service in-house technicians have a minimum of 10 years experience in the manufacturing, installation and maintenance of the DHP Dental Air Compressor.

Approved Testing Laboratories

ETL Testing Laboratories File Number (ETL) - 82327

Canadian Standards Association File Number (CSA) - 82327

Payment Procedures

All DHP products are prepaid. Dansereau Health Products accepts personal checks issued in U.S.A. funds, Mastercard and Visa credit cards. Financing terms are also available.

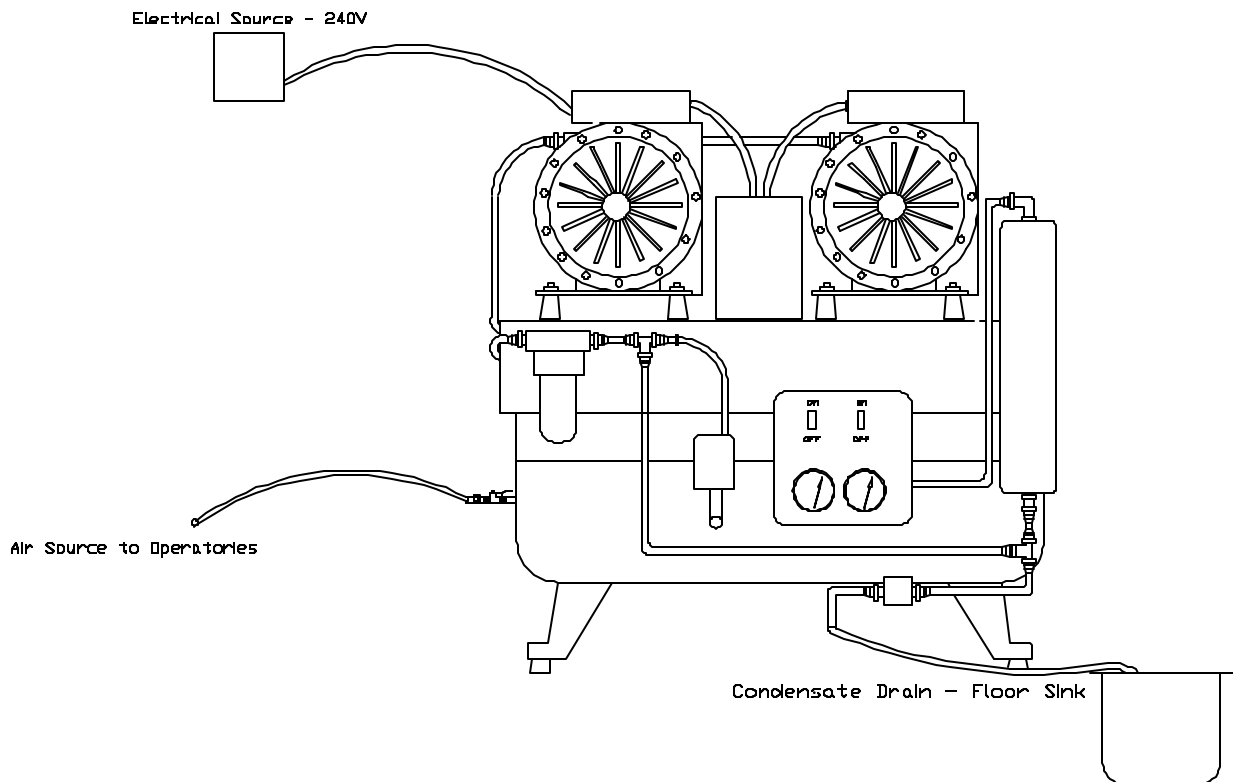
Shipping Procedures

All DHP Dental Air Compressors are shipped via common carrier (truck line). Freight is not included in the cost of the DHP Dental Air Compressor.

DHP Air Compressor - Pre-installation Guide-Section 2

LOCATION

The DHP Dental Air Compressor should be installed in a well ventilated area. The DHP Dental Air Compressor is air cooled and without proper air circulation the lifespan of the Dental Air Compressor could be shortened significantly. The sound level of the Dental Air Compressor, when in operation, should be considered when locating an area within the dental office for the Dental Air Compressor. It is strongly recommended that insulation should be added to the walls adjacent to the Dental Air Compressor. The ambient temperature in the dental office equipment room should never exceed 40 degrees Fahrenheit minimum and 100 degrees Fahrenheit maximum. The dental office equipment room will require a minimum of 5 air changes per hour which can be met with a 50 CFM vent fan in a 5' x 5' x 9' room. The DHP Dental Air Compressor can be located outside of the dental office, however it is extremely important the air compressor be covered from the elements as well as have the proper ventilation as previously mentioned. It is strongly recommended that visual inspections of the air compressor be done on a weekly basis. When locating the air compressor outside of the dental office serious consideration should be taken to secure the dental air compressor to discourage theft and or vandalism.



The above Dental Air Compressor is a typical installation. The recommended Dental Equipment Room design is covered in Section 9 of this manual.

It should be noted that local building codes will supersede any recommended installation guidelines in this manual.

DHP Air Compressor Pre-installation Guide (Cont.)

ELECTRICAL REQUIREMENTS - LINE VOLTAGE - Single phase 120v/60hz or 240/60hz electricity is required for proper operation of the DHP Dental Air Compressor. All electrical sources to the DHP Dental Air Compressors **MUST BE PROPERLY GROUNDED!** All DHP Dental Air Compressors are available in either 120 volt or 240 volt, however the DHP one Horsepower model is standard 120 volt and the DHP two Horsepower model is standard 240 volt. The DHP one horsepower model is available in 240 volt upon written request - verbal requests will not be accepted.

ELECTRICAL CIRCUIT - All DHP Dental Air Compressors require a dedicated 20 amp service. It is acceptable to use a 120 volt or 240 volt switch (depending upon which of the DHP models are ordered) to activate the Dental Air Compressor, however it is strongly recommended that the electrical panel fuse breaker not be used to activate the Dental Air Compressor as it will deteriorate the fuse and significantly shorten the lifespan of the fuse.

PLUMBING REQUIREMENTS

AIR LINE - A 1/2" copper male pipe thread fitting on the utility closet end of the air line to the operatories is required to attach the Dental Air Compressor supply line to.

NOTE: The DHP Dental Air Compressor regenerating desiccant drying system will expel a minimal amount of moisture and it is recommended that the 1/4" poly - tubing be situated in either a floor sink, drain or small bucket that can be emptied as needed.

Dental Air Compressor Specifications

Total Horsepower - 2 - 1 HP Motors

Total air delivery at 80 - 100 PSI - 4.7 CFM

Air Tank Capacity - 11 gallons

Sound level - 68db

Maximum Users - 4

Weight and Dimensions

Weight - 300 lbs. / 340 lbs. w/pallet

Height - 31 inches

Width - 19 inches

Length - 23 inches

Electrical Requirements

Voltage requirements:

2 horsepower - 240 volts/10 amp dedicated circuit

Recommended:

Wire Size - 12 AWG

Circuit Breaker - 20 Amp

DHP Air Compressor Unpacking and Installation - Section 3

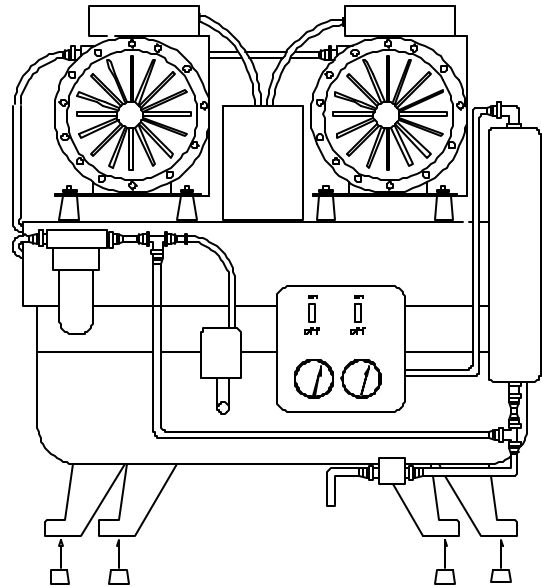
1) Open the top of the Dental Air Compressor crate with a knife, remove all the internal packing material and Dental Air Compressor accessories package and set aside - **DO NOT DISCARD ANY OF THE PACKING MATERIAL OR PACKAGING PRODUCTS UNTIL THE DENTAL AIR COMPRESSOR HAS BEEN COMPLETELY INSTALLED.**

2) With Dental Air Compressor crate on the floor use a knife to open the box. Do not attempt to lift the Dental Air Compressor simply dislodge the cardboard crate from the wooden pallet.

3) With the cardboard crate removed from the wooden pallet locate the four bolts attaching the Dental Air Compressor to the wooden pallet and using a 7/16" open wrench remove the bolts from the pallet.

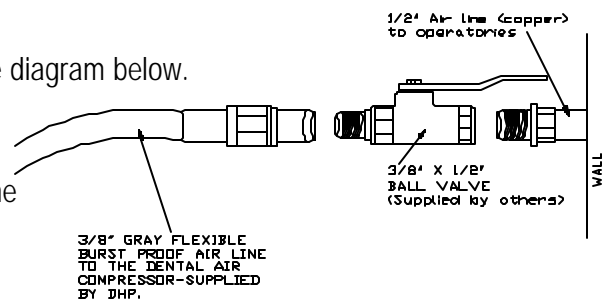
4) Carefully slide the Dental Air Compressor off the wooden pallet and situate it in the desired location.

5) Locate the Dental Air Compressor accessories plastic bag housing the four rubber isolation feet and attach them to the Dental Air Compressor. See diagram below.



Air Line Connection

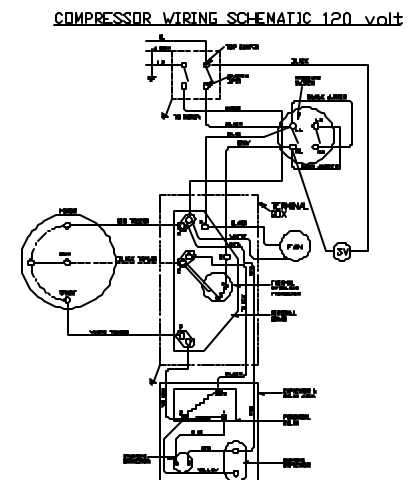
6) Locate the Gray burst proof 3/8" tubing (attached to the exhaust/supply side of the Dental Air Compressor) and attach it to the air line supplying air to the operators.



Electrical Connections

1) The DHP one horsepower Dental Air Compressor is shipped as a standard 120 volts (unless it is specified in writing a 240 volt model is required). The DHP two horsepower Dental Air Compressor is shipped as a standard 240 volts (the two horsepower Dental Air Compressor is available in 240 volt only).

2) A wiring schematic for the DHP one horsepower is shown below and two horsepower Dental Air Compressor is shown on the following page as well as on the inside of the DHP Dental Air Compressor's control box.



DHP Air Compressor Maintenance - Section 4

The DHP Dental Air Compressors are all reduced maintenance products. They are specifically engineered for minimal maintenance based on standard projected use. Excessive use of the DHP Dental Air Compressor will require more scheduled maintenance than the standard recommended maintenance listed below.

Daily Maintenance-Dental Air Compressor

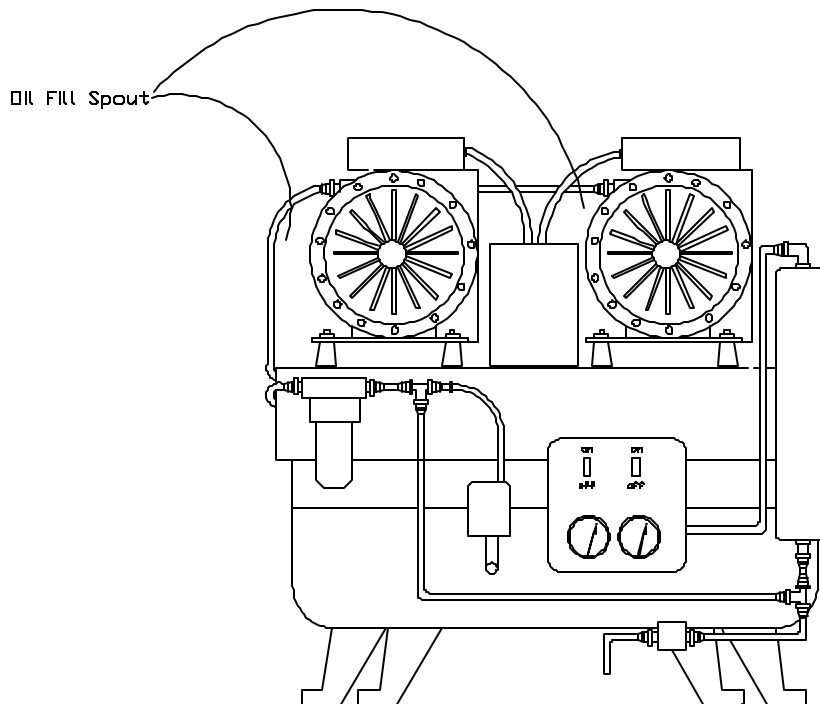
1) The DHP Dental Air Compressor does not require any daily maintenance, however, it is strongly recommended that periodic visual inspections as well as listening for any 'unusual' noises be done on a daily basis. The DHP Dental Air Compressor should operate (cycle on) when in use. If the air compressor cycles on when dentist has not used any air out of the storage tank their may be an air leak in the air system. If you notice any 'unusual' noises or cycling problems contact DHP customer service immediately.

Weekly Maintenance-Dental Air Compressor

1) The DHP Dental Air Compressor does not require any weekly maintenance, however it is strongly recommended that periodic visual inspections as well as listening for any 'unusual' noises be done on a weekly basis.

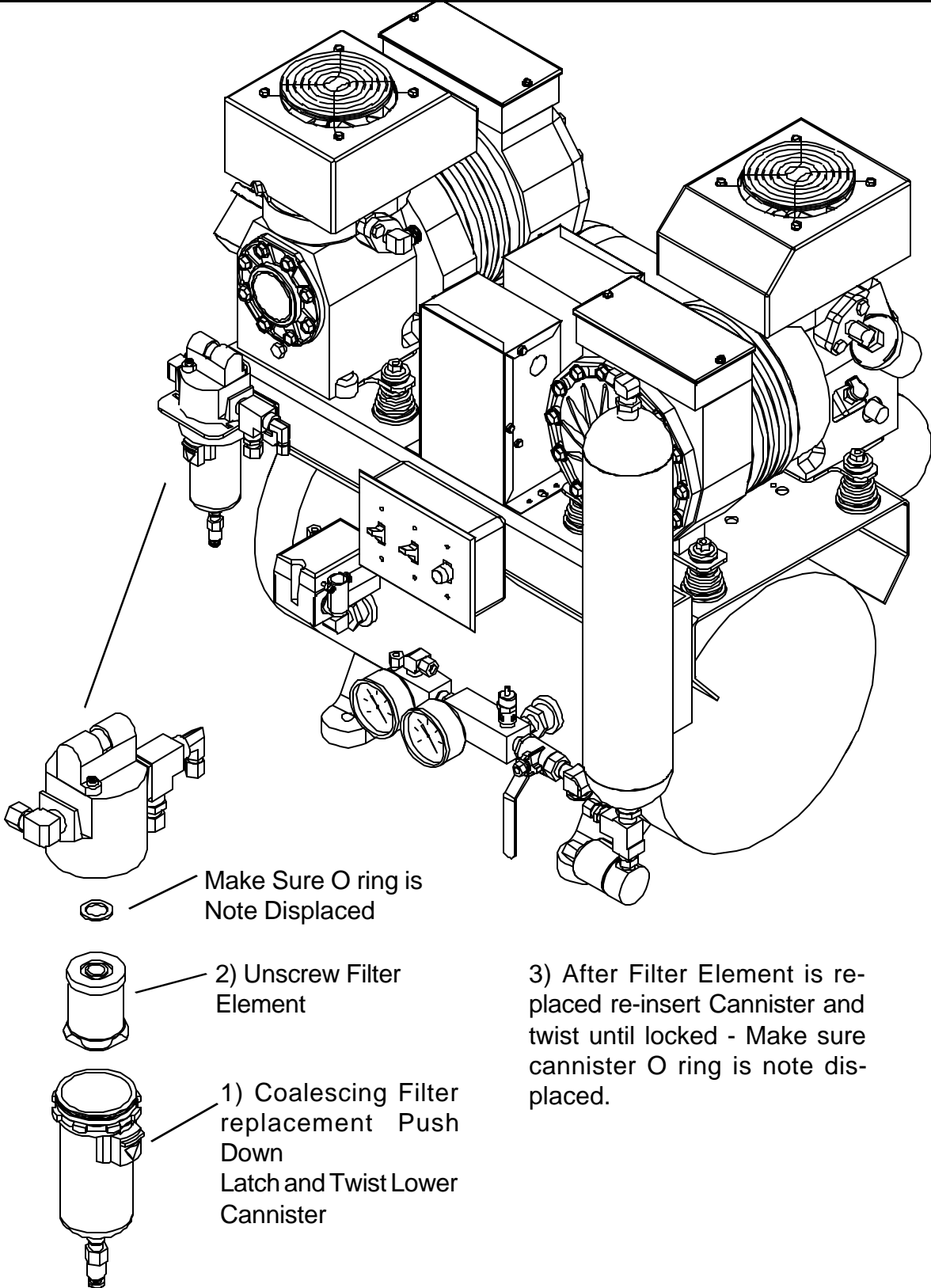
Monthly Maintenance-Dental Air Compressor

1) Visually inspect the oil level and add oil as required. See Diagram below



***DO NOT OVER FILL THE OIL IT WILL CAUSE SERIOUS DAMAGE TO THE MOTOR
DO NOT USE OTHER INDUSTRIAL OIL IN THE DHP DENTAL AIR COMPRESSOR IT WILL
CAUSE SERIOUS DAMAGE TO THE MOTOR***

DHP Air Compressor Filter Replacement



DHP Air Compressor Trouble Shooting Guide - Section 5

The DHP Dental Air Compressors addressed in this manual are all the industry standard Lubricated Copelmatic Air Compressors. They are extremely durable, and with the proper maintenance should operate trouble free for many years. This section of the DHP Dental Air Compressor manual is designed to assist the owner/end user in diagnosing simple problems in their Dental Air Compressor system and rectifying the problem with relative ease.

Dental Air Compressor does not operate

1) Check the electrical source

A - Locate the electrical panel and verify if the electrical breaker has ' tripped '. Prior to resetting the electrical breaker fuse visually inspect the dental air compressor for any unusual conditions (oil and or air leaks, loose electrical connections etc.). You may attempt to reset the fuse if you are experienced in this procedure. If you are not comfortable with this procedure it is strongly recommended that you contact an electrician or another person who is experienced in this procedure.

B - If you have attempted to reset the electrical breaker fuse and the breaker does not reset or 'trips' again - **DO NOT ATTEMPT TO RESET THE BREAKER FUSE AGAIN - CONTACT AN ELECTRICIAN IMMEDIATELY!**

C - If after the previously recommended visual inspection with no unusual conditions noticed and the electrical breaker fuse does reset upon the first attempt, monitor the situation as you may have an undersized or defective electrical breaker fuse and it should be replaced as soon as possible by a licensed electrician.

2) Electrical Source is intact-dental air compressor has power

A - Turn off the electrical power to the dental air compressor and CAREFULLY FEEL THE SIDE OF THE DENTAL AIR COMPRESSOR MOTOR-BE EXTREMELY CAUTIOUS AS IT MAY BE VERY HOT.

If the dental air compressor motor is hot contact DHP immediately!

B - If the dental air compressor is not hot contact DHP for further instructions.

Dental Air Compressor does not supply enough air

1) Verify dental air compressor is undersized for the required demand of air.

A - Check if the users versus the horsepower rating of the dental air compressor are proper. If the number of users outweigh horsepower of the dental air compressor you will receive inadequate air.

B - Check the Dental Air Compressor for air leaks. The Dental Air Compressor motor should operate, without any operatories or handpieces in use, for approximately 3 to 4 minutes building the air pressure in the storage tank. If the Dental Air Compressor motor operates for more than 5 minutes attempting to build up air pressure in the storage tank there is an air leak in the air compressor system. If the Dental Air Compressor motor operates for the estimated 3 to 4 minutes building the air pressure in the storage tank, shuts off temporarily and turns on again without any of the dental operatories or handpieces being operated you have a small air leak in the air compressor.

1) Check the air compressor for loose fittings.

2) Check the dental operatories dental unit junction boxes for air leaks.

3) Check the dental unit delivery system head for leaks.

DHP Air Compressor Trouble Shooting Guide

NOTE: IN ANY OF THE PREVIOUSLY LISTED SOLUTIONS YOU MAY SIMPLY LISTEN FOR THE AIR LEAK. CAUTION SHOULD BE TAKEN WHEN CHECKING THE AIR COMPRESSOR FOR AIR LEAKS AS THE DENTAL AIR COMPRESSOR MOTOR COULD BE HOT. IF YOU ARE AT ALL UNCOMFORTABLE WITH DIAGNOSING A PROBLEM REGARDING THE DHP DENTAL AIR COMPRESSOR CONTACT DHP IMMEDIATELY!

Dental Air Compressor does not supply enough air to one operatory

- 1) Verify by consulting the dental units owners manual that the dental unit is operating properly.
- 2) If the dental unit is operating properly verify the dental unit in question does not have any additional filtration system that may require maintenance.
- 3) Check the dental unit junction and visually inspect for either air leak or 'kinked' or bent hosing.

NOTE: IF ANY OF THE PREVIOUSLY LISTED SOLUTIONS DO NOT REMEDY THE PROBLEM CONTACT DHP IMMEDIATELY!

Dental Air Compressor does not operate-motor humming noise is evident

- 1) The dental air compressor motor is frozen as a result of lack of oil. Verify if the dental air compressor head has sufficient oil by visually inspecting the motor oil site glass as per the diagram in Section 6 (oil sight glass location). DO NOT ATTEMPT TO OPERATE THE DENTAL AIR COMPRESSOR FURTHER CONTACT DHP IMMEDIATELY AS YOU MAY DAMAGE THE MOTOR BEYOND REPAIR.

Dental Air Compressor does not operate-motor humming noise is evident. (cont.)

- 2) The dental air compressor motor does not have the proper electrical voltage. Verify if the dental air compressor is 120 volts or 240 volts and using the proper electrical testing equipment verify the electrical source is sufficient.

Dental Air Compressor motor operates but does not provide any air

- 1) The dental air compressor system has an open air line. Turn on the compressor and listen for the air leak. Verify and correct the problem. Do not attempt to adjust any of the air lines on the dental air compressor contact the DHP factory customer service representative for additional information.
- 2) The dental air compressor motor shaft has broken. DO NOT ATTEMPT TO OPERATE THE DENTAL AIR COMPRESSOR CONTACT THE DHP FACTORY CUSTOMER SERVICE REPRESENTATIVE IMMEDIATELY FOR ADDITIONAL INSTRUCTIONS.



The DHP dental air compressor has one function to supply clean dry air for use in a dental office application. The dental air compressor is simple by design, however complex in operation. The DHP dental air compressor could be hazardous to work on. If you are not confident in your ability to trouble shoot any problem, it is strongly recommended that you contact a DHP factory customer service representative for additional information. Our factory trained customer service representatives are available at 1-800-423-5657 between 7:00 am and 3:30 P.M. Pacific Standard Time.