

Dansereau Super Flow Dry Vacuum System Owners Manual

USA Phone: (800) 423-5657
International Phone: (951) 549-1400
Fax: (951) 549-1411
Website: WWW.DHPDENTAL.COM
E MAIL: Harry@dhp dental.com

Manufactured at: 250 E. Harrison Street, Corona 92879

DHP Dry Vacuum - Table of Contents

Section 1 - Vacuum Pump

Section 2- Pre-installation Guide

Section 3 - Unpacking

Section 4 - Installation

Section 5 - Maintenance

Section 6 - Trouble Shooting Guide

Dental Equipment Room Design

DHP Dry Vacuum Pump - Section 1

Dansereau Health Products has been producing dental equipment for over 40 years. The information contained in this manual is a compilation of facts collected over those 40 years. The Super Flow Vacuum System is a Dry Evacuation System with a Tank Wash Down System to keep the Storage Tank clean.

The Super Flow Vacuum System is available in 208 volt 50/60 Hz electricity only.



World Wide Toll-Free Access

DHP has instituted a toll free telephone service in the United States, Canada and Mexico. Our telefax line (951) 549-1411 is available 24 hours a day.

Toll Free Phone:

U.S.A. and Puerto Rico 1-800-423-5657

Canada 1-800-423-5657

Mexico 095-800-423-5657

E-Mail Address - CustomerService@DHPDENTAL.COM - For Customer Service Questions.

Customer Service

DHP customer service in-house technicians have a minimum of 10 years experience in the manufacturing, installation and maintenance of the DHP vacuum pump.

Approved Testing Laboratories

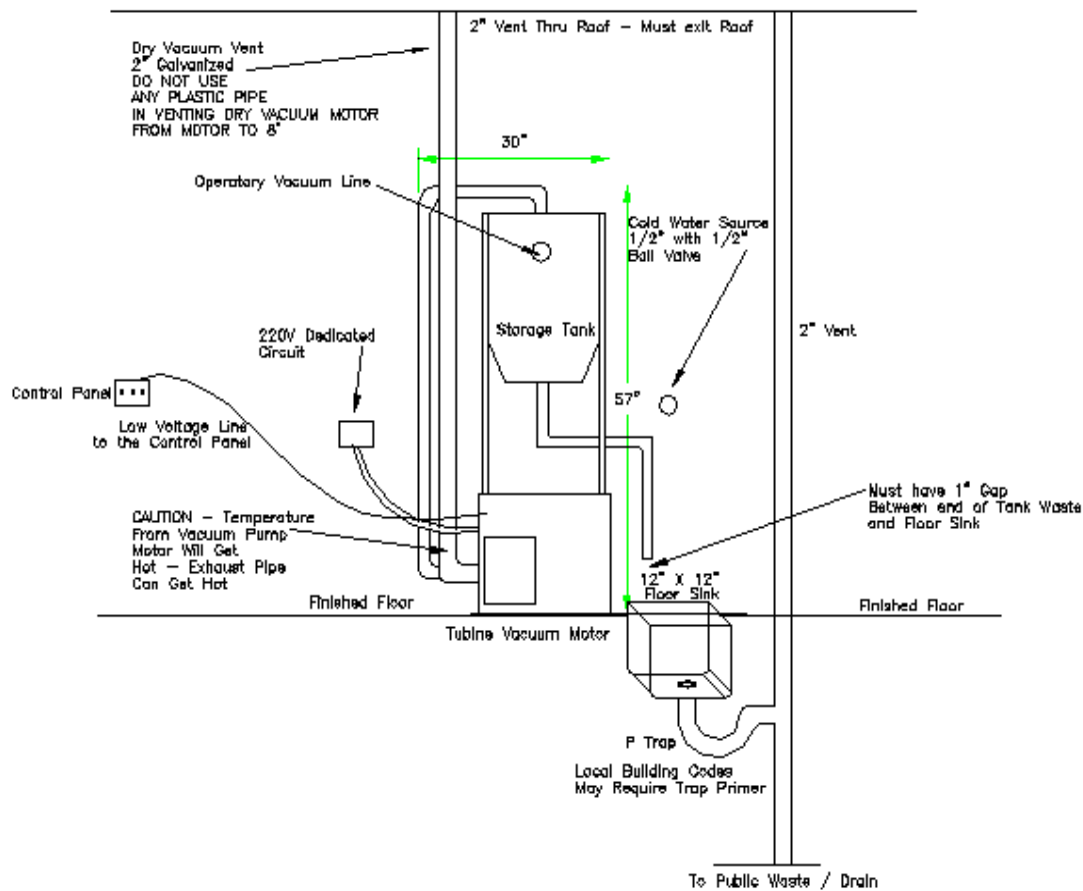
ETL Testing Laboratories File Number (ETL) - LISTING TBD

Canadian Standards Association File Number (CSA) - LISTING #TBD

DHP Vacuum Pump - Pre-installation Guide - Section 2

Location

The DHP Super Flow Vacuum System should be installed in a well ventilated area. The DHP Super Flow Vacuum System is air cooled and without proper air circulation the lifespan of the vacuum pump could be shortened significantly. The sound level of the vacuum pump, when in operation, is very quiet and can be placed within a dental facility. The ambient temperature in the dental office equipment room should never exceed 40 degrees Fahrenheit minimum and 100 degrees Fahrenheit maximum. The dental office equipment room will require a minimum 5 air changes per hour which can be met with a 50 CFM vent fan in a 5' x 5' x 9' room. NOTE THE SUPERFLOW DRY VAC CAN BE INSTALLED SIDE BY SIDE OR STACKED.



The above DHP Super Flow Dry Vacuum System Vacuum installation elevation is a typical installation.

It should be noted that local building codes will supersede any recommended installation guidelines in this manual.

DHP Dry Vacuum Specifications

Specifications:

Voltage 230 VAC - 208 Voltage will require a Buck Booster Transformer

- Frequency Hz 50 - 60
- Output H.P. - 2
- Current Amps 11
- Free Delivery (CFM) 70
- Vacuum In. Hg. 16" max 10" continuous
- Weight (lbs.) 97
- Width (inches) 16
- Length (inches) 20
- Height (inches) 16
- Tank (gallons) 16
- Includes: Low voltage control, separator tank with automatic drain and check valve
- Automatic washout system included
- Other tank sizes available
- Vacuum use factor 8 or more volume hoses opened simultaneously

VACUUM LINE SIZING CHART

NUMBER OF OPERATORIES SEE NOTE	VACUUM LINE PIPE DIAMETER	
	PVC sch 40	COPPER TYPE "M"
1	1 1/4"	1"
2	1 1/4"	1"
3	1 1/4"	1 1/4"
4	1 1/2"	1 1/2"
5	1 1/2"	1 1/2"
6	2"	1 1/2"
7	2"	1 1/2"
8	2"	1 1/2"

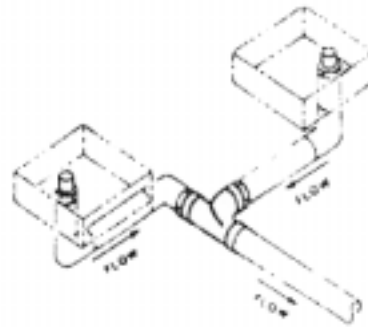
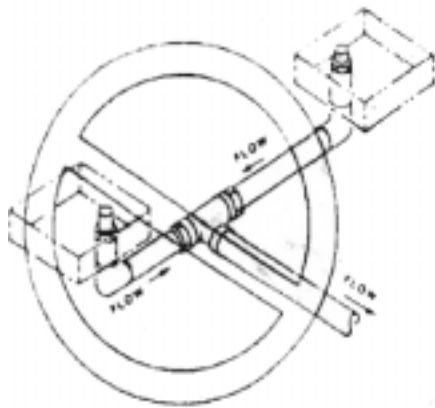


RISER ASSEMBLY DIA CHART

TOTAL H.P.	RISER ASSY. DIAMETER
1	1
1 1/2	1
2	1
2	1
3	1
4	1
4 1/2	1 1/4
6	1 1/4

DHP Vacuum Pump- Pre-installation Guide

BRANCH LINE TERMINATION TO TWO OPERATORIES



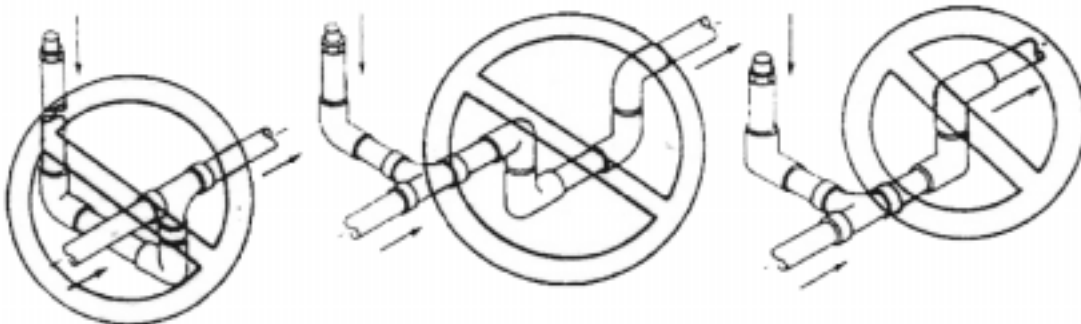
THIS BRANCH LINE TERMINATION IS SHOWN CORRECTLY. NEVER USE THE INCORRECT EXAMPLE SHOWN AT LEFT FOR VACUUM SYSTEMS.

MOST COMMON VACUUM PLUMBING ERRORS

DO NOT ALLOW ANY PIPE TO BRANCH OFF ANOTHER PIPE BELOW THE CENTERLINE OF THE MAIN OR BRANCH LINE PIPE. SEE FIG. 6 FOR CORRECT BRANCH LINE TAKE OFF.

IMPORTANT

TO PREVENT SUCTION LOSS, DO NOT ALLOW A TRAP TO BE PLUMBED AT ANY LOCATION IN THE SYSTEM EXCEPT MAIN LINE RISER ASSEMBLY (FIG. 1) AND OVERHEAD VERTICAL RISER (FIG. 5).



DHP Vacuum Pump- Pre-installation Guide

Electrical Requirements

LINE VOLTAGE - Single phase 220v/50/60hz electricity is required for proper operation of the DHP Dry Vacuum System. All electrical sources to the DHP Vacuum Pump MUST BE PROPERLY GROUNDED! All DHP Dry Vacuum Systems are operated by a LOW VOLTAGE SWITCH or the AUTO WASH DOWN SYSTEM WILL NOT OPERATE.

LOW VOLTAGE - A 18/3 low voltage rated wire should be run from one central location to allow the DHP Dry Vacuum System to be turned on and off.

Plumbing Requirements

WATER LINE - A 1/2" cold water source is required for proper operation of the DHP Dry Vacuum System Wash Down. A 1/2" shut off valve is required at end of the water source. Cold water is an important requirement for the proper operation of the DHP Vacuum Pump.

WASTE LINE - The industry standard for exhausting the Dry Vacuum waste into a floor sink Local Building Codes will require a 1" air gap from the exhaust of the Dry Vacuum Waste Outlet into the floor sink.

SPECIAL NOTE: The Dry Vacuum Motor will require a 2 Inch Vent from the Exhaust of the Motor thru the roof to outdoors. It is required that the first 8 feet (minimum) of the vent pipe from the Dry Vacuum Motor be of metal consistency (No Plastic). Recommended Galvanized. The exhaust of the Dry Vacuum Motor can be hot over constant usage.

Vacuum Line

The industry standard is a 1.5" schedule 40 PVC line reduced to a 1" schedule 40 PVC line at the operatory. **Schedule 40 PVC is the only Manufacturer Recommended product for Dental Vacuum Lines.**

Vacuum Pump Specifications:

Total Horsepower - 2

Electrical 208V - Buck Boost Transformer may be required if only 208 is present.

Maximum Users:

High Volume Evacuation (HVE) - 4

High Volume Evacuation & Saliva Ejectors - 2(HVE) & 4 (SE)

Tank Dimensions:

Height - 36 Inches / Depth - 21 Inches / Width - 21 Inches

Motor Dimensions:

Height - 19 Inches / Depth - 24 Inches / Width - 24 Inches

Weight - Tank 45lbs / Motor - 110lbs

UNDER NO CONDITIONS SHOULD CONTINUOUS RUN SINKS OR DENTAL CUSPIDORS BE INSTALLED ON A VACUUM LINE

DHP Dry Vacuum System - Installation

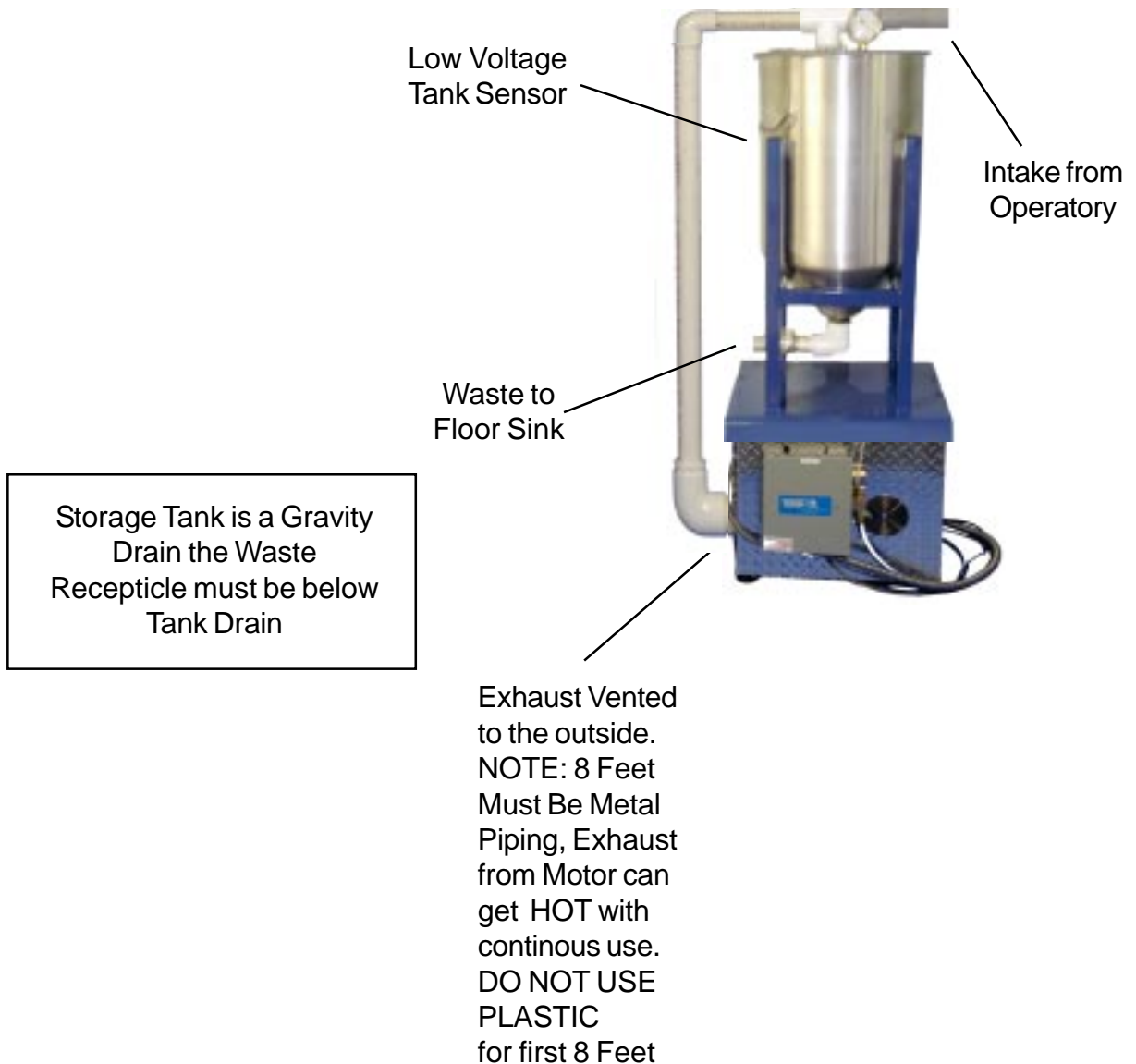
1) Remove Stainless Steel Tank from Shipping Box
Weight of Tank 35lbs.



2) Remove the Dry Vacuum Motor from the Shipping Boxes and Place in Appropriate Place in Utility Room
Weight of Motor 80lbs.



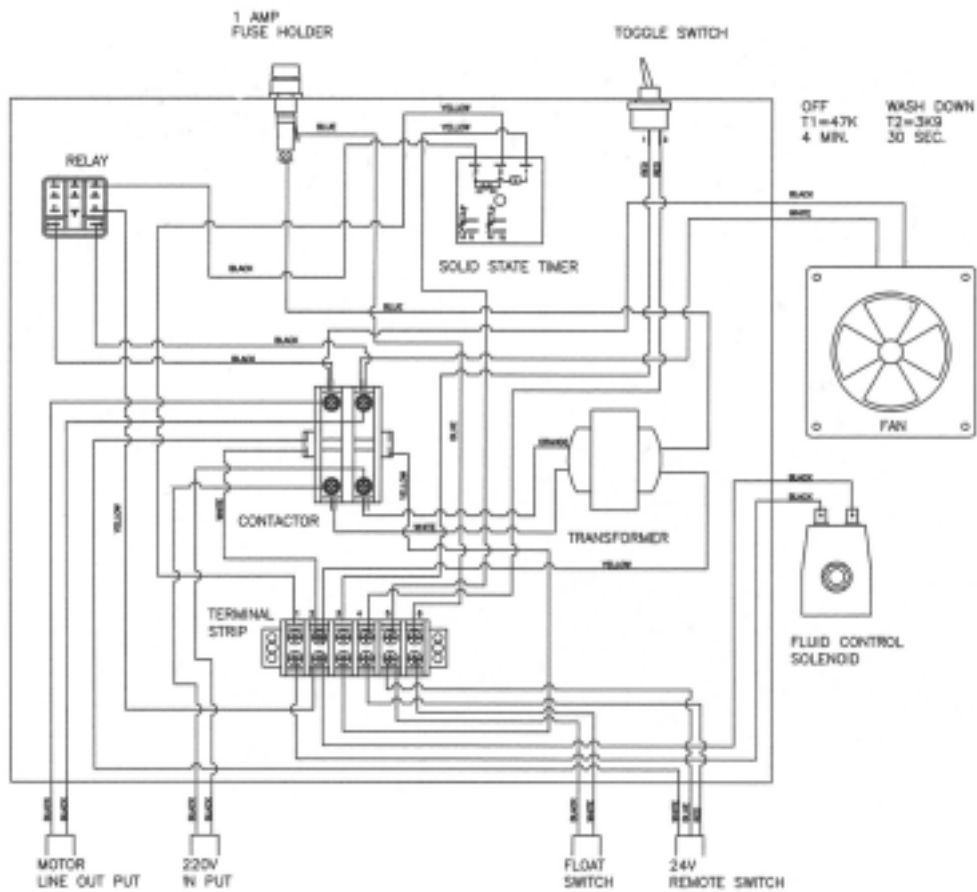
DHP Dry Vacuum - Installation



Special Note: Do not adjust the CFM on the Vacuum System unless you consult directly with the Dansereau as over adjusting the CFM may cause particulate matter to be drawn into the Vacuum Motor. A Particulate Matter Filter is in place to prohibit the introduction of matter from the Storage Tank into the Vacuum Motor, but overadjusting the CFM will strain the Particulate Matter Filter and cause motor damage.

DHP Dry Vacuum Installation

- 1) Electrical installation must be performed by a licensed Electrician.
- 2) Low Voltage Controls must be installed to properly operate the wash down system
- 3) Dry Vacuum Motor must be properly grounded.



DHP Dry Vacuum Maintenance and Troubleshooting

Maintenance:

The Super Flow 10 Dry Vacuum System requires no maintenance or service. A non foaming cleanser can be used to clean the incoming vacuum lines. A Foaming Cleanser will damage the vacuum motor.

Twice Monthly check the In Line Particulate Matter filter for moisture or particulate matter. If moisture or particulate matter is present contact Dansereau immediately.

Never set the Vacuum Pressure above 7HG.

Trouble Shooting:

Motor not turning on.

- A) Check the fuse at the Electrical Panel in the dental facility.
- B) Check the Fuse on the Super Flow Dry Vacuum
- C) Check the connections on the low voltage control panel
- D) Contact Dansereau immediately (800) 423 - 5657

Introduction of any foreign matter into the vacuum motor will damage the integrity of the motor and may void the warranty. We have installed a particulate matter filter to prohibit the foreign matter passing through to the vacuum motor. However if you are using Air Abrasion you must have an In Line Filter. Failure to use the appropriate filter will void your warranty.