
Dansereau Health Products, Inc.

2004 PRE CONSTRUCTION GUIDE

DANSEREAU HEALTH PRODUCTS, INC.

TABLE OF CONTENTS

- Dansereau Health Products dental operator's**
- Dansereau Health Products dental air compressor**
- Dansereau Health Products dental vacuum pump**
- Dental X-ray Specifications/Requirement/Electrical**
- Dental X-ray in-wall backing**
- Dental X-ray Pass-thru cabinet**
- Water Solenoid and Filtration System**

GENERAL INFORMATION

There are three types of dental delivery system used in a Standard General Practitioners dental office.

1) The over the patient delivery system (Chair mounted light and dental unit).

) The rear service delivery system, this can be in form of a cart or cabinet mounted in the rear of the operatory or the head of the patient.

3) The side delivery system, this can also be in the form of a cabinet or cart that is installed to the side of the dental chair.

The plumbing for each of these systems varies by the specification of the equipment to be installed and the location of the plumbing required to operate the dental equipment. Be aware that some of the requirements are subtle, carefully review the list of equipment to be installed and verify with the equipment supplier the proper schematics are being used in the construction of the dental office. If you are not sure of the specific requirements needed to properly install the dental equipment contact Dansereau Health Products, Inc. immediately.

The most common re-occurring problem - is the contractor not contacting the dental equipment supplier and verifying the dental equipment to be installed is the same as the schematics that have been supplied to the contractor. (MAKE SURE IF A DENTAL DELIVERY SYSTEM HAS A CUSPIDOR A 2" DRAIN HAS BEEN INSTALLED BY THE CONTRACTOR)

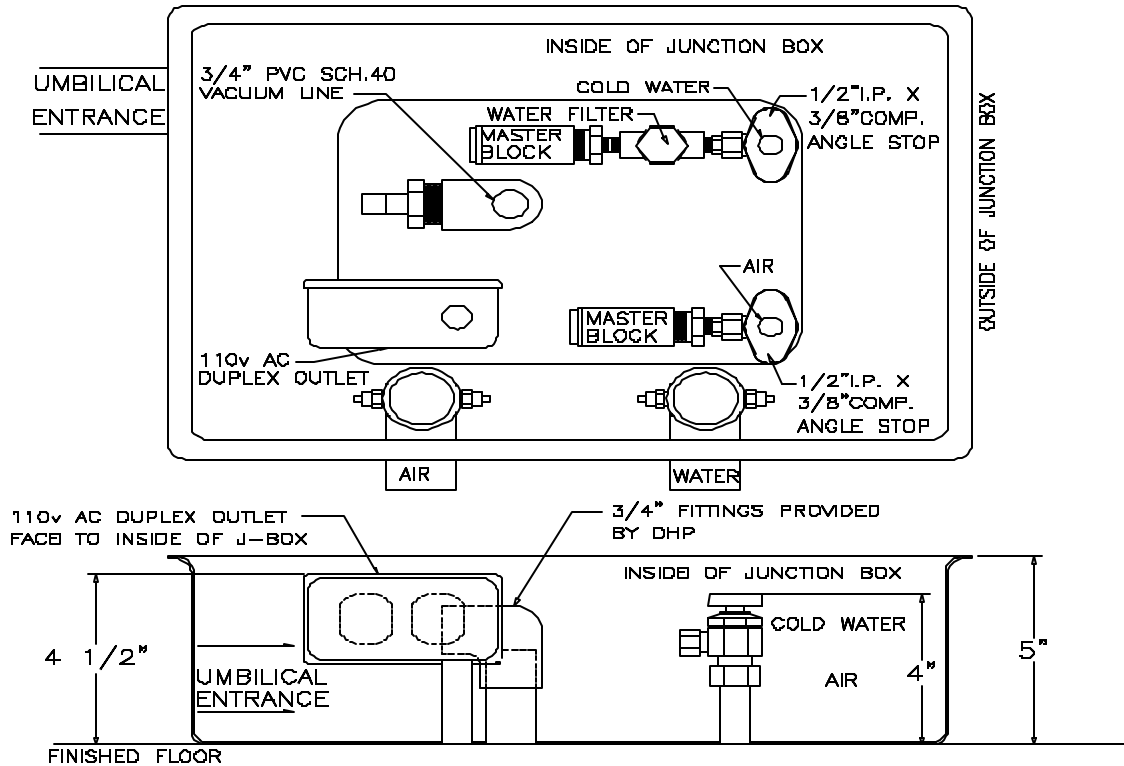
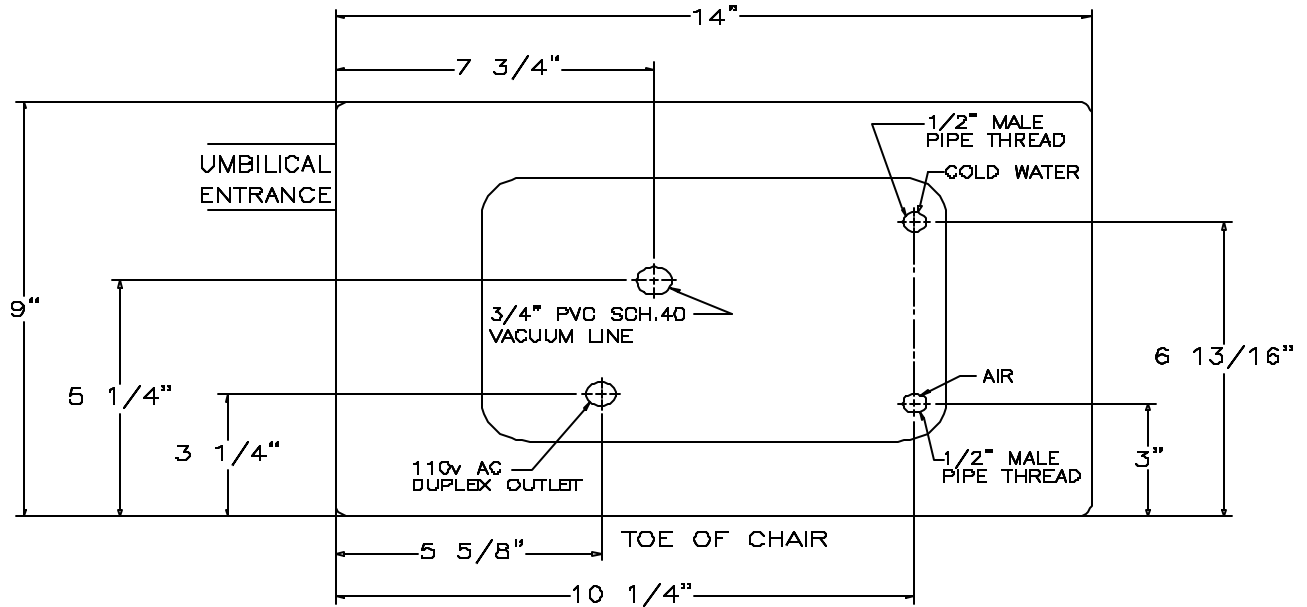
Dental Delivery System without Cuspidor

Applicable Models:

CLINIC 1 and *CLINIC 4* Operator packages

CHAIR AMERICA 1 and *CHAIR AMERICA 4* Operator packages

UNIVERSAL 1 and *UNIVERSAL 4* Operator packages

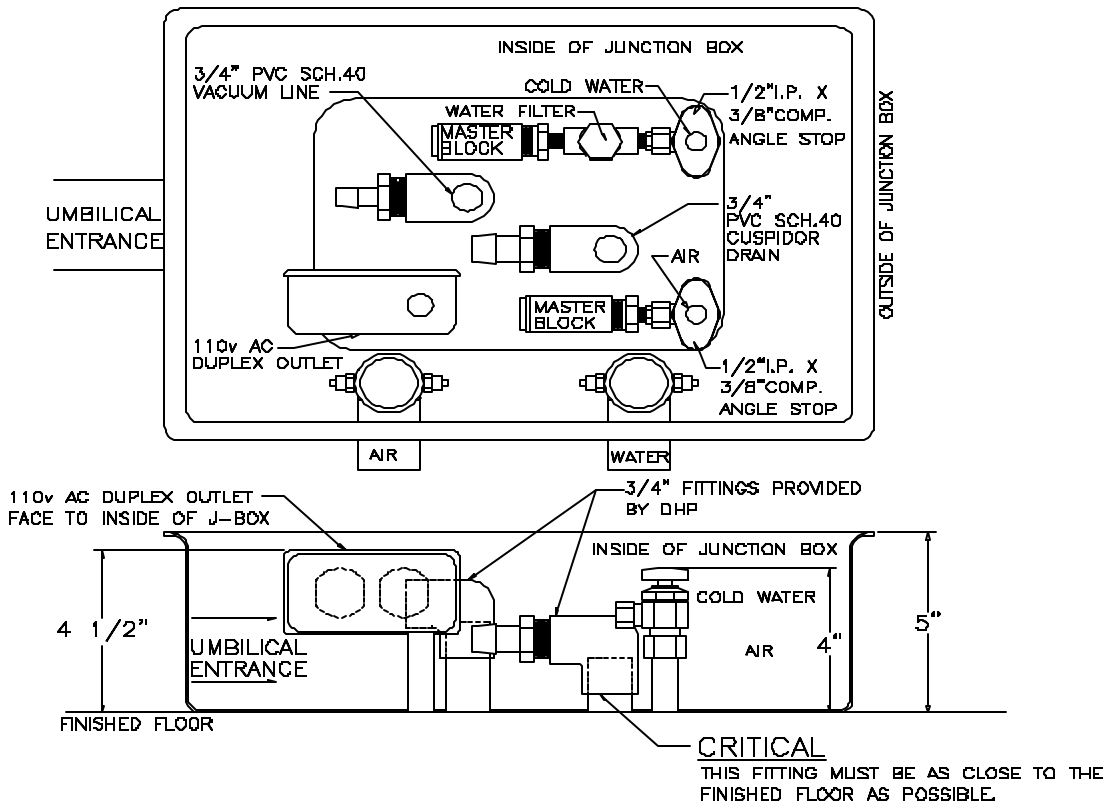
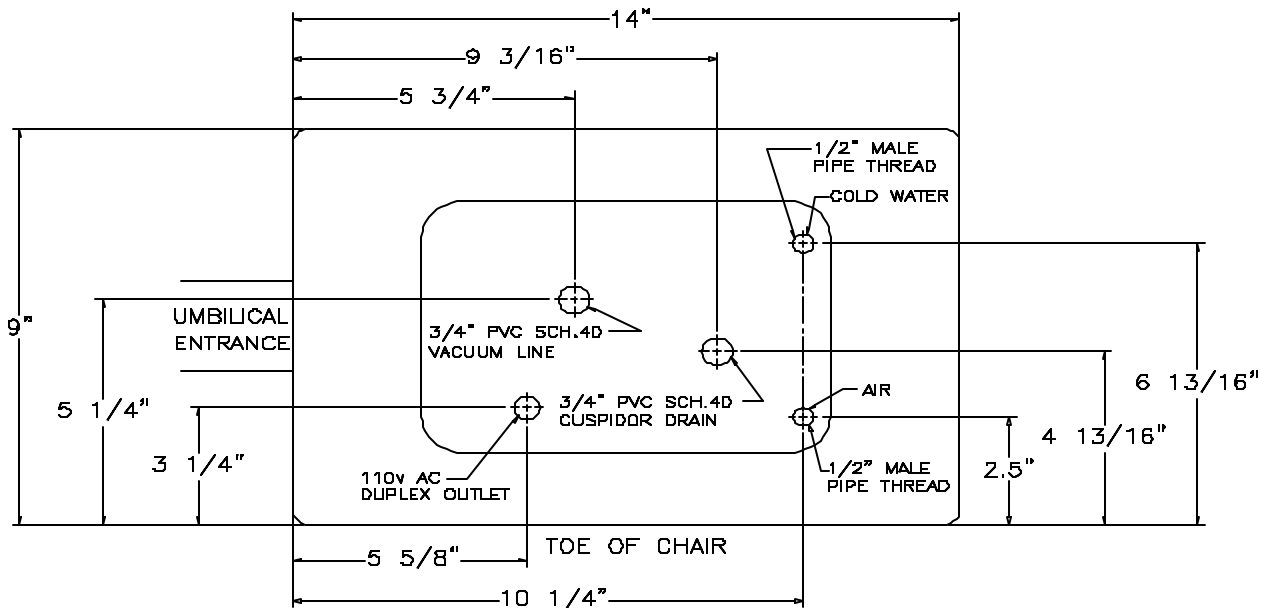


Dental Delivery System with Cuspidor

Applicable Models:

Clinic 2 and Clinic 3 Operatory packages

Chair America 2 and Chair America 3 Operatory packages



DANSEREAU HEALTH PRODUCTS, INC.

CALIFORNIA DELIVERY SYSTEM SPECIFICATIONS

SPECIFICATIONS:

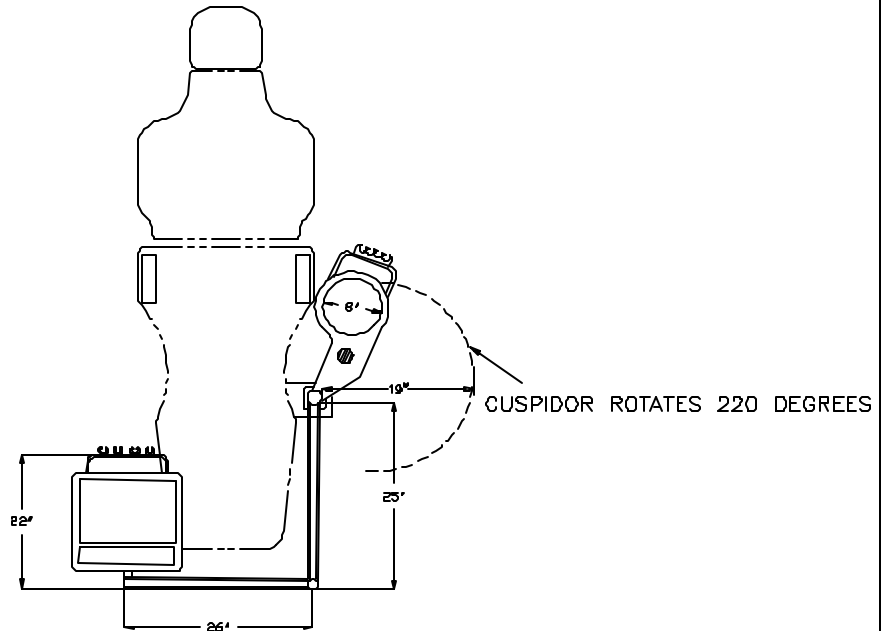
WEIGHT

- CHAIR 280 lbs.
- UNIT 120 lbs.
- LIGHT 40 lbs.

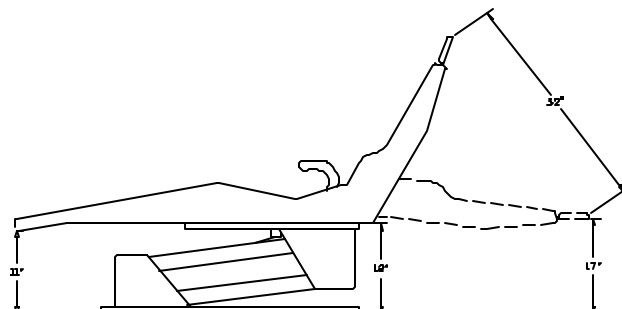
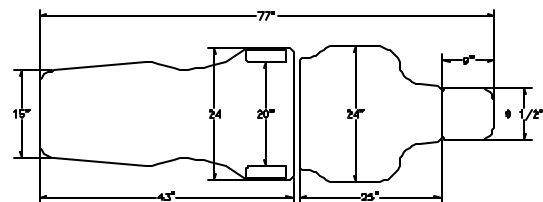
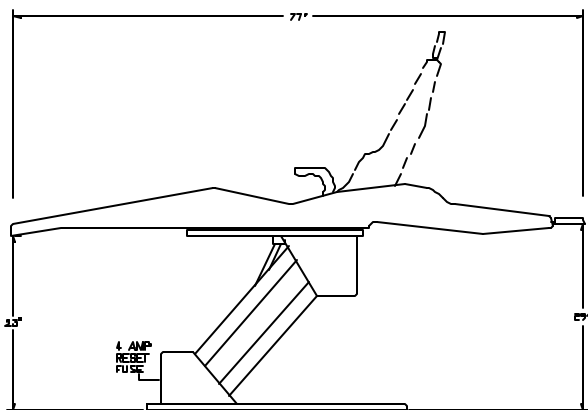
BOX DIMENSIONS

- CHAIR 65"X25"X18"
- UNIT 32"X37"X48"
- CHAIR BASE 19.5"X29"X37"

PRICE AND SPECIFICATION
CHANGES MAY BE MADE
WITHOUT PRIOR NOTIFICATION



CAIFORNIA CHAIR SPECIFICATIONS



SPECIFICATIONS

CHAIR BACK MOTOR

- 115V-60HZ
- 1/8 HORSEPOWER
- SINGLE PHASE
- THERMALLY PROTECTED
- TIME RATING- INTERMITTENT DUTY
- 2 AMP

BASE MOTOR

- 115V-60HZ
- 1/3 HORSEPOWER
- SINGLE PHASE
- RPM 3250
- THERMALLY PROTECTED CAPACITOR 68 MFD 440V
- TIME RATING- INTERMITTENT
- 4 AMP RESET FUSE

- FIVE YEAR WARRANTY-MOTOR
- ONE YEAR WARRANTY-LIMIT SWITCHES

DANSEREAU HEALTH PRODUCTS, INC.

CHAIR AMERICA SPECIFICATIONS

SPECIFICATIONS:

WEIGHT

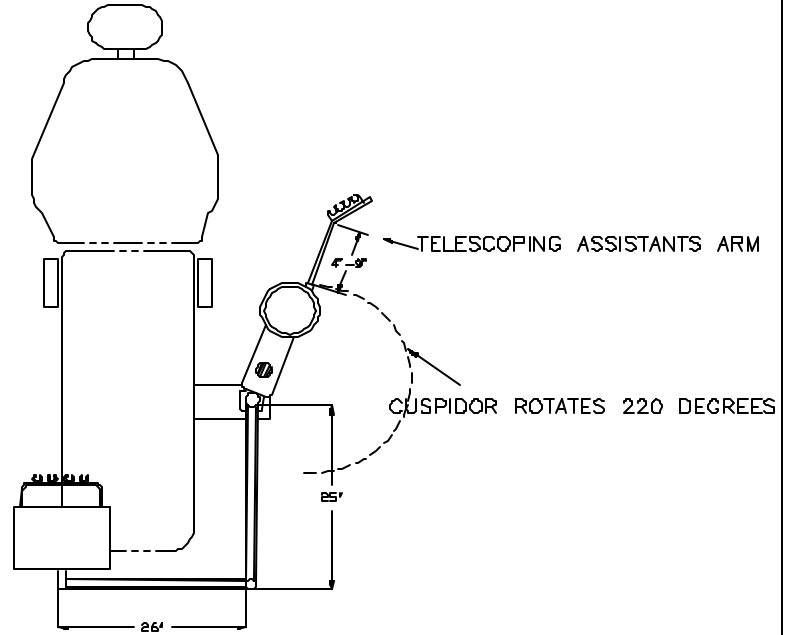
- CHAIR 280 lbs.
- UNIT 120 lbs.
- LIGHT 40 lbs.

BOX DIMENSIONS

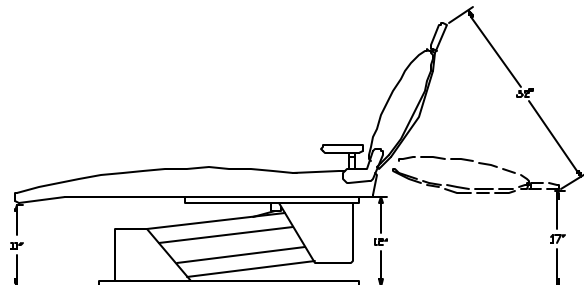
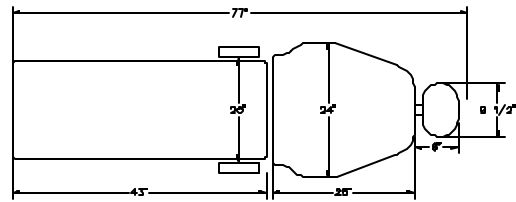
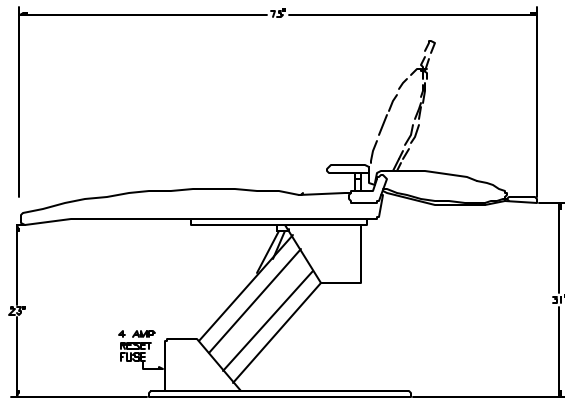
- CHAIR 65" X 25" X 18"
- UNIT 32" X 37" X 48"
- CHAIR BASE 19 5" X 29" X 37"

THIS PRODUCT IS MANUFACTURED BY:
DANSEREAU HEALTH PRODUCTS INC
559 S. ROSE ST.
ANAHEIM, CA. 92805
PH# (714) 776-5357
TELEFAX# (714) 776 -4652

PRICE AND SPECIFICATION
CHANGES MAY BE MADE
WITHOUT PRIOR NOTIFICATION



CHAIR AMERICA SPECIFICATIONS



SPECIFICATIONS

CHAIR BACK MOTOR

115V-60HZ
1/8 HORSEPOWER
SINGLE PHASE
THERMALLY PROTECTED
TIME RATING- INTERMITTENT DUTY
2 AMP

BASE MOTOR

115V-60HZ
1/3 HORSEPOWER
SINGLE PHASE
RPM 3250
THERMALLY PROTECTED CAPACITOR 68 MFD 440V
TIME RATING- INTERMITTENT
4 AMP RESET FUSE

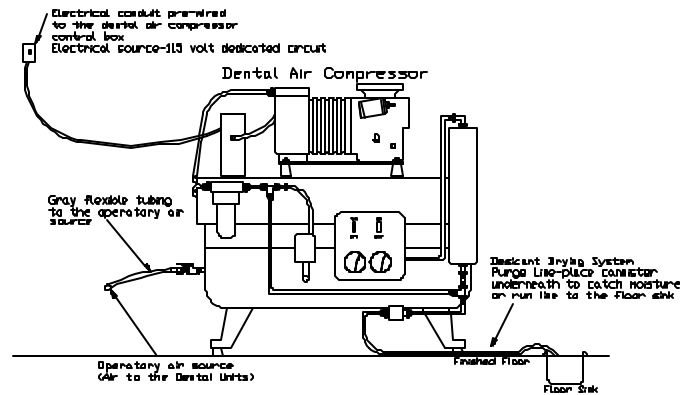
FIVE YEAR WARRANTY-MOTOR
ONE YEAR WARRANTY-LIMIT SWITCHES

Air Compressor - Pre-installation

LOCATION

The DHP Dental Air Compressor should be installed in a well ventilated area. The DHP Dental Air Compressor is air cooled and without proper air circulation the lifespan of the Dental Air Compressor could be shortened significantly. The sound level of the Dental Air Compressor when in operation, should be considered when locating an area within the dental office for the Dental Air Compressor. It is strongly recommended that insulation should be added to the walls adjacent to the Dental Air Compressor.

The ambient temperature in the dental office equipment room should never exceed 40 degrees Fahrenheit minimum and 100 degrees Fahrenheit maximum. The dental office equipment room will require a minimum of 5 air changes per hour which can be met with a 50 CFM vent fan in a 5' x 5' x 9' room. The DHP Dental Air Compressor can be located outside of the dental office, however it is extremely important the air compressor be covered from the elements as well as have the proper ventilation as previously mentioned. It is strongly recommended that visual inspections of the air compressor be done on a weekly basis.



ELECTRICAL REQUIREMENTS

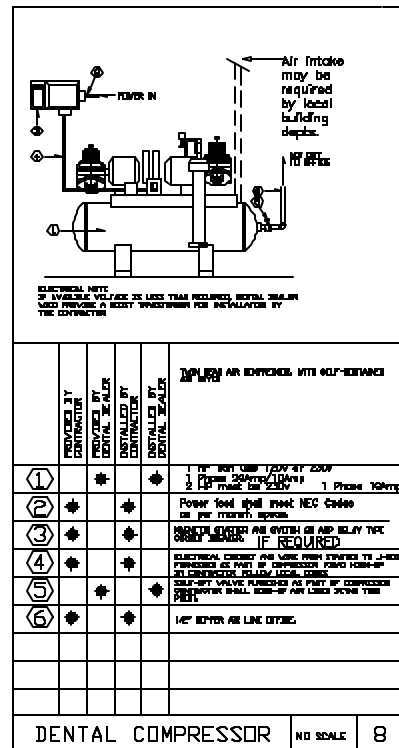
LINE VOLTAGE - Single phase 120v/60hz or 240/60hz electricity is required for proper operation of the DHP Dental Air Compressor. All electrical sources to the DHP Dental Air Compressors **MUST BE PROPERLY GROUNDED!** All DHP Dental Air Compressors are available in either 120 volt or 240 volt.

ELECTRICAL CIRCUIT - All DHP Dental Air Compressors require a dedicated 20 amp service. It is acceptable to use a 120 volt or 240 volt switch (depending upon which of the DHP models are ordered) to activate the Dental Air Compressor, however it is strongly recommended that the electrical panel fuse breaker not be used to activate the Dental Air Compressor as it will deteriorate the fuse and significantly shorten the lifespan of the fuse.

PLUMBING REQUIREMENTS

AIR LINE - A 1/2" copper male pipe thread fitting on the utility closet end of the air line to the operatories is required to attach the Dental Air Compressor supply line to.

NOTE: The DHP Dental Air Compressor regenerating desiccant drying system will expel a minimal amount of moisture and it is recommended that the 1/4" poly - tubing be situated in either a floor sink, drain or small bucket that can be emptied as needed.



DHP Vacuum Pump - Pre-installation

LOCATION

The DHP Vacuum Pump should be installed in a well ventilated area. The DHP Vacuum Pump is air cooled and without proper air circulation the lifespan of the vacuum pump could be shortened significantly. The sound level of the vacuum pump, when in operation, should be considered when locating an area within the dental office for the vacuum pump. It is strongly recommended that insulation should be added to the walls adjacent to the vacuum pump. The ambient temperature in the dental office equipment room should never exceed 40 degrees Fahrenheit minimum and 100 degrees Fahrenheit maximum. The dental office equipment room will require a minimum 5 air changes per hour which can be met with a 50 CFM vent fan in a 5' x 5' x 9' room. Below is a typical elevation layout for the vacuum pump system within the dental office equipment room. The layout for the entire dental office equipment room is located in Section 8 of this manual.

Electrical Requirements

LINE VOLTAGE - Single phase 120v/60hz or 240v/60hz electricity is required for proper operation of the DHP Vacuum Pump. All electrical sources to the DHP Vacuum Pump **MUST BE PROPERLY GROUNDED!** All DHP single horsepower vacuum pumps are manufactured to accommodate 120 voltage. The DHP two horsepower vacuum pump systems are manufactured to accommodate 240 voltage. **LOW VOLTAGE** - The DHP Vacuum Pump has an ON/OFF low voltage capability. A 18/3 low voltage rated wire can be run from each operator or from one central location to allow the DHP Vacuum Pump to be turned on and off from various locations within the dental office. **NOTE:** Do not connect 120v or 240v to the low voltage lines as it will cause internal electrical damage to the vacuum pump motor.

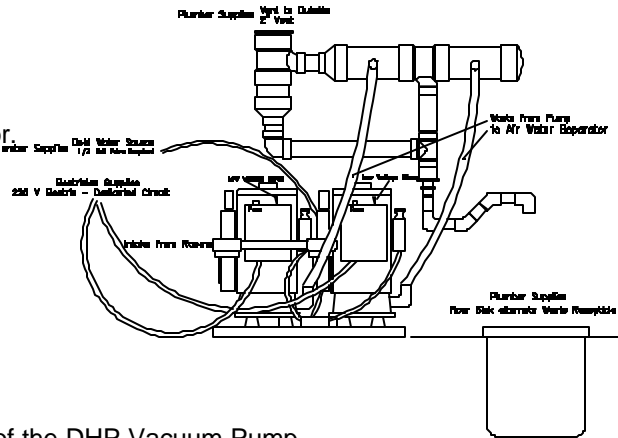
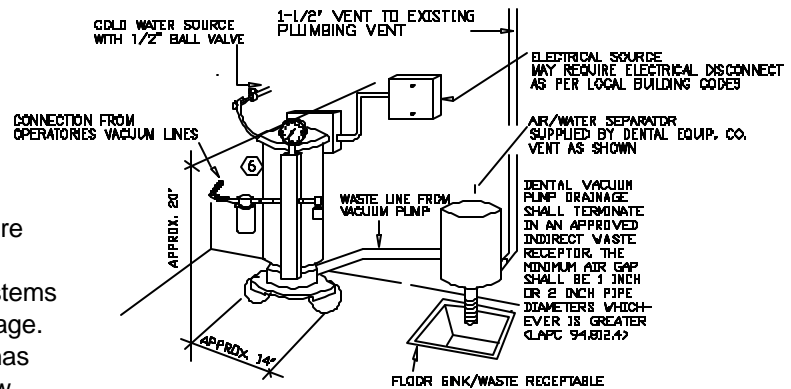
Plumbing Requirements

WATER LINE - A 1/2" cold water source is required for proper operation of the DHP Vacuum Pump. A 1/2" shut off valve is required at end of the water source. Cold water is an important requirement for the proper operation of the DHP Vacuum Pump. If the cold water is restricted in any manner the DHP Vacuum Pump will malfunction and cause serious damage to the main seal and impeller of the DHP Vacuum Pump.

WASTE LINE - The industry standard for exhausting the vacuum pump waste is to exhaust the waste into an Air/Water Separator with the waste ending in a floor sink or a 'P' trap. Local Building Codes will require a 1" air gap from the exhaust of the Air/Water Separator into the floor sink or the 'P' method of waste disposal.

Vacuum Line

The industry standard is a 1" schedule 40 PVC line reduced to a 3/4" schedule 40 PVC line at the operator. Section 8 in this manual will supply additional information regarding the vacuum line system layout. Current Building Codes may not allow schedule 40 PVC and may require copper as substitute. It is strongly recommended that you contact your local building department and inquire if schedule 40 PVC is acceptable to use in the vacuum line system fabrication.



UNDER NO CONDITIONS SHOULD CONTINUOUS RUN SINKS OR DENTAL CUSPIDORS BE INSTALLED ON A VACUUM LINE

DANSEREAU HEALTH PRODUCTS, INC.

TYPICAL INTRA-ORAL X-RAY SPECIFICATIONS

NOTE: Listed below are basic x-ray manufacture specifications required for installation for most Intra-Oral X-rays. If you have any questions contact Dansereau or the manufacturer of the x-ray purchased prior to installing the x-ray.

Support Requirements:

Control Box

The x-ray control box must be able to withstand 60 lb. shear load and 100 lb withdrawal force at each of the 6 mounting bolts.

Arm and Head

The X-ray head and arm must be able to withstand a minimum 100lb. shear load and a 450 lb. withdrawal force at each of the four mounting bolts. The next section contains typical x-ray backing diagrams.

Electrical Requirements:

115 VAC, +15V AC, - 10 V AC (105V to 130V) - Required for all intra-oral x-rays

A three GROUNDED circuit, separately connected to the central distribution panel with an over-current protection device rated for 15 amp.

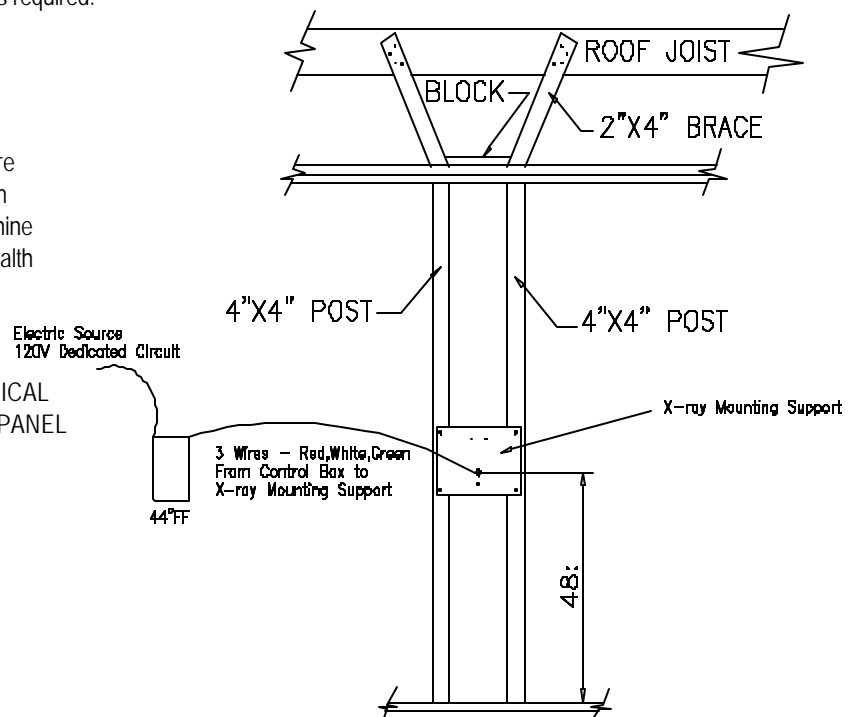
Recommended Wire Size is 12 AWG BUT if the wire run distance is to exceed 50 feet, 10 AWG is required. For wire run distances in excess of 75 feet 8 AWG is required.

Interconnecting wiring , control box to arm and head assemblies:

4 conductor 12AWG is recommended for wire run up to 50 feet. For wire runs between 50 and 75 feet 10 AWG is required and for wire run distances in excess of 75 feet 8 AWG is required.

This diagram indicates the typical support backing required for a standard intra-oral x-ray machine. If you are unsure that the parameters outlined in this diagram will accommodate the Intra-oral x-ray machine that is to be installed contact Dansereau Health Products immediately.

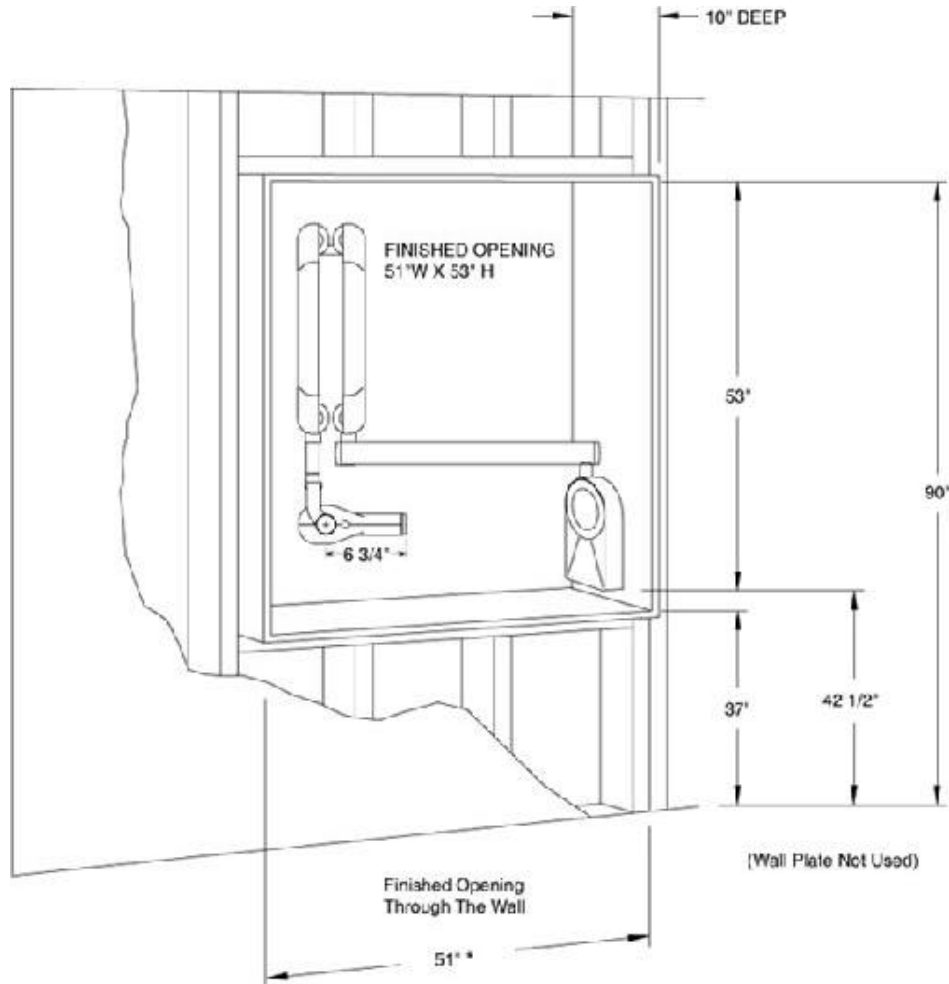
NOTE: CERTAIN X-RAY MACHINES WILL REQUIRE MULTIPLE #12 ELECTRICAL WIRES TO RUN FROM THE CONTROL PANEL (Typically located outside the x-ray room) AND THE X-RAY HEAD (Located in the x-ray room). IT IS IMPORTANT THAT YOU VERIFY THIS INFORMATION WITH THE EQUIPMENT SUPPLIER PRIOR TO COVERING THE WALLS WITH DRYWALL.



DENT- X ENDOS WALL INSTALLATION

DANSEREAU HEALTH PRODUCTS, INC.

DENTEX ENDOS X RAY CABINET DIMENSIONS



This diagram indicates the typical pass-thru cabinet support backing and dimensions required for a standard intra-oral x-ray machine. If you are unsure that the parameters outlined in this diagram will accommodate the Intra-oral x-ray machine that is to be installed contact Dansereau Health Products immediately.

NOTE: CERTAIN X-RAY MACHINES WILL REQUIRE MULTIPLE #12 ELECTRICAL WIRES TO RUN FROM THE CONTROL PANEL (Typically located outside the x-ray room) AND THE X-RAY HEAD (Located in the x-ray room). IT IS IMPORTANT THAT YOU VERIFY THIS INFORMATION WITH THE EQUIPMENT SUPPLIER PRIOR TO COVERING THE WALLS WITH DRY-WALL.

DANSEREAU HEALTH PRODUCTS, INC.

DENTEX ENDOS X RAY SPECIFICATIONS

Product data Endos AC – Rev.0 Page 1

Product Data

Endos AC

Intra-oral X-ray unit

Tubehead features

High voltage circuit type Single phase, self-rectifying, grid controlled

Rated output voltage 70 kVp \pm 6% @ 230V

70 kVp \pm 6% @ 120V

Tubehead current 8 mA

Tubehead power 430 VA

Total filtration 2 mm Al eq. @ 70 kV

Maximum deviation of output current \pm 13%

Pre-heating time 100 ms

Interval between exposures

(duty cycle)

1:32

Minimum focus to skin distance 20 cm

30 cm with optional collimator cone

X-ray field (at collimator tip) Circular, diameter 6 cm

Rectangular 35x45 mm with optional diaphragm

Leakage radiation @ 1m 0.1 mGy/h

Technical factors for leakage radiation 70 kV, 8 mA, 1 s, 1:32 duty cycle

Tube insert type OCX/70-G

Focal spot 0.8 (IEC 336)

Anode material Tungsten

Anode angle 19°

Inherent filtration 0.5 mm Al eq. @ 70 kV

Anode thermal capacity 6 kJ

Scissors and extension arm features

Material Aluminum

Type of painting Glossy

Mounting type - Wall mount with local timer

- Wall mount with remote X-ray pushbutton

- Ceiling mount

- Mobile unit on trolley

Choice of extension arm length

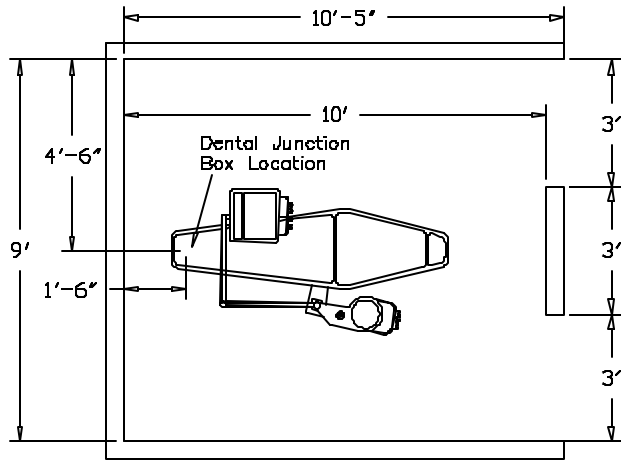
(only for wall mounted units)

- 30 cm

- 60 cm

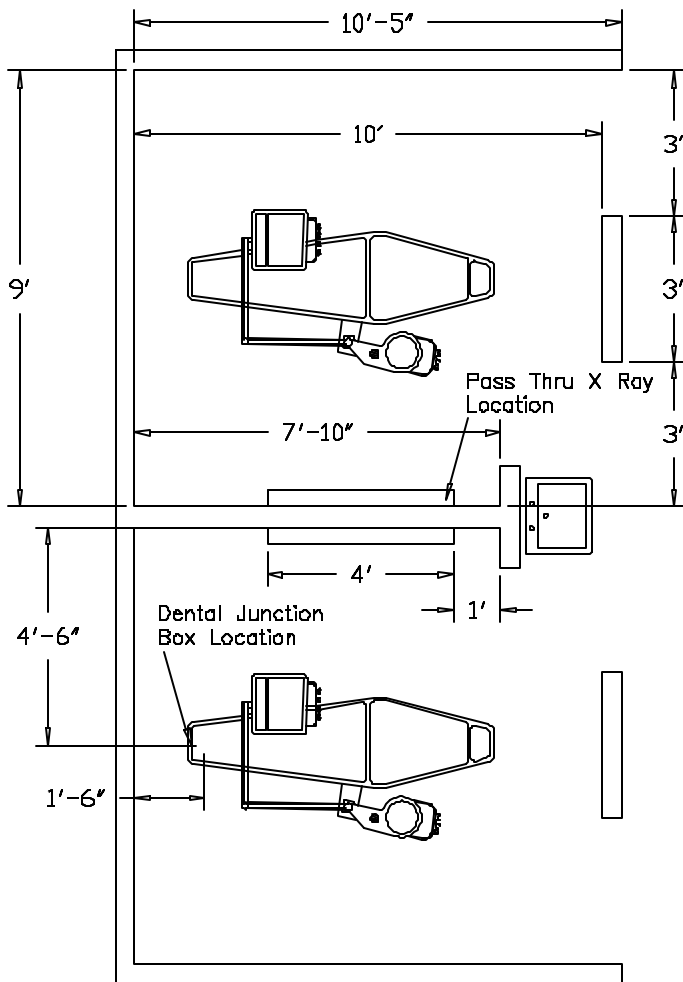
- 80 cm

DANSEREAU HEALTH PRODUCTS, INC.



Single Operator Layout

NOTE: These are typical measurements. Variations are acceptable based upon existing conditions and operator design



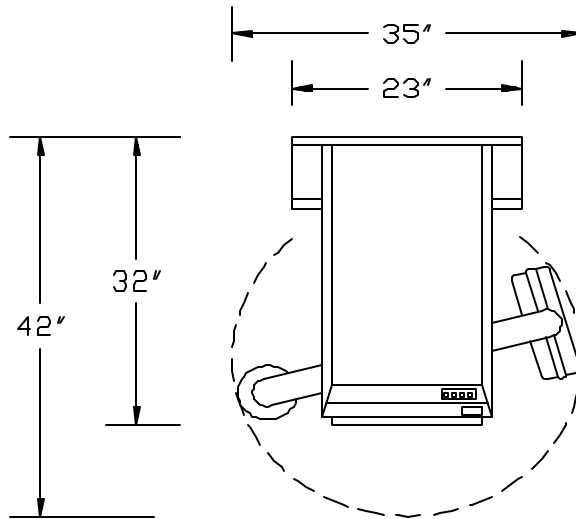
2 Operator Layout

DANSEREAU HEALTH PRODUCTS, INC.

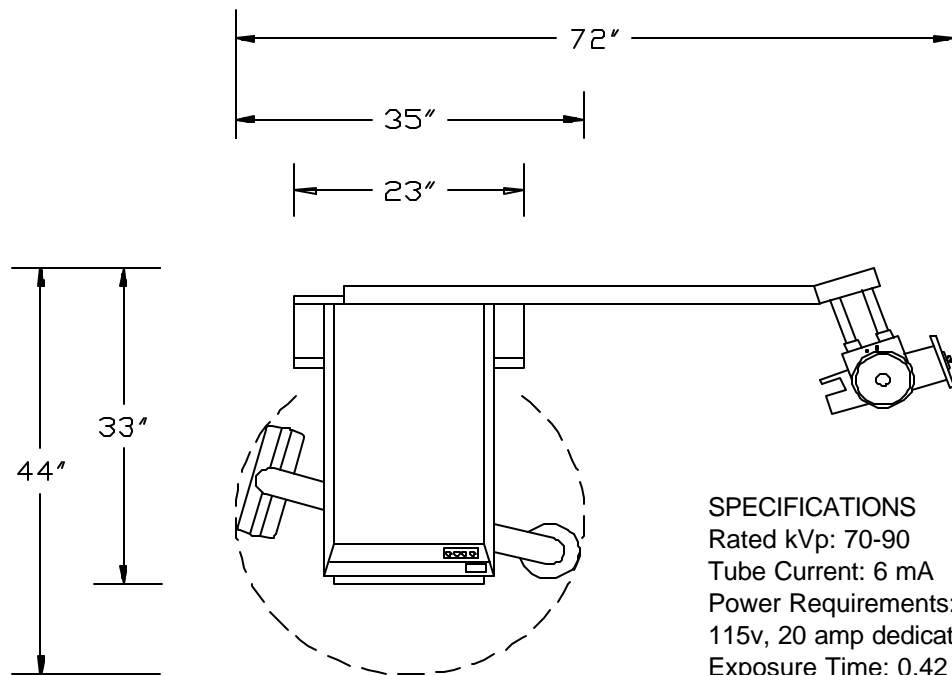
Panoramic Corporation PC - 1000

SPECIFICATIONS

Focal Spot: 0.5mm X 0.5mm
Focal Trough:
Anterior Region - 12mm
Posterior Region - 35mm
Rated kVp: 70-90
Tube Current: 6 mA
Power Requirements:
115v, 20 amp dedicated circuit
Exposure Time: 12 Seconds
Film Size: 6" X 12"
Weight: 485lbs.
Maximum Height: 92"



PC - 1000/Laser 1000

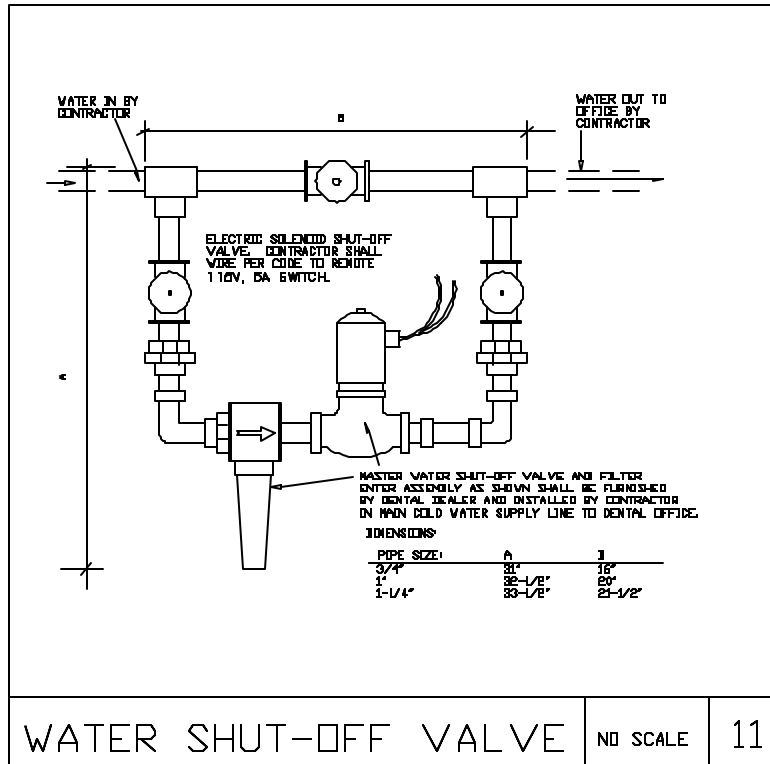


SPECIFICATIONS

Rated kVp: 70-90
Tube Current: 6 mA
Power Requirements:
115v, 20 amp dedicated circuit
Exposure Time: 0.42 in 8 Increments
Film Size: 6" X 12"
Weight: 515lbs.
Maximum Height: 92"
Laser Type: Laser Diode

DANSEREAU HEALTH PRODUCTS, INC.

WATER SOLENOID WITH FILTRATION SYSTEM



WATER SHUT-OFF VALVE

NO SCALE

11

A water solenoid with Filtration System is strongly recommended for all dental offices. The water solenoid is installed in the water supply incoming to the dental office. It allows you to electronically turn-off the water to the dental office, preventing the possibility of a water leak when the dental is not open. This extremely important in multiple story buildings.

The water filtration system will significantly reduce the repair and maintenance costs associated with particulate matter in typical water that collects in the small ports and routing valves in all dental equipment. This is essential in area's that have high mineral content and urban area's that have older plumbing.

The information contained in this manual is a collection of typical installation requirements to easily and proficiently install the dental equipment manufactured by Dansereau Health Products, Inc.. We recommend that state licensed contractors do the work outlined in this manual.

All construction and installations of dental equipment are unique and consideration should be given when you are following the diagrams contained in this manual.

Any information contained in this manual does not supersede any building codes or specifications given by the licensed contractor responsible for the work being performed.

If you have any questions or need clarification on any information contained within this manual contact Dansereau Health Products immediately.